

## Location card: L1109M - Brera Location n°CR53



**CODE:** L1109M

**DISTRICT:** brera

**TOTAL SQ.M.:** 90

**HIGHT:** 3m

**FLOOR:** 1

**ROOMS NUMBER:** 1

**ENTRANCE ON STREET:** Si

**ENTRANCE FROM COURTYARD:** No

**TOTAL CAPACITY:** 40 people

### CONTACT

**website:** [www.brerarealestete.it/commercial-rent](http://www.brerarealestete.it/commercial-rent)

**email** [info@breralocation.com](mailto:info@breralocation.com)

**tel.** 0236638150

[Link scheda location Online](#)

### DESCRIPTION:

Located in the central Brera Design District in an elegant building, the location is on the basement, accessible by stairs from the ground floor.

### PRICE

**daily:** non dichiarato

**fuorisalone:** non dichiarato

### TECHNICAL EQUIPMENT

Lighting: yes

Audio System: no

Video System: no

Wi-fi: yes

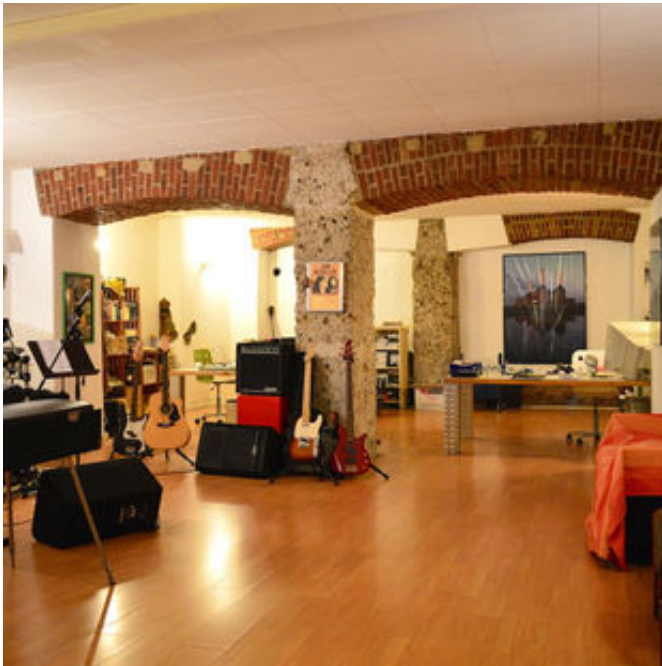
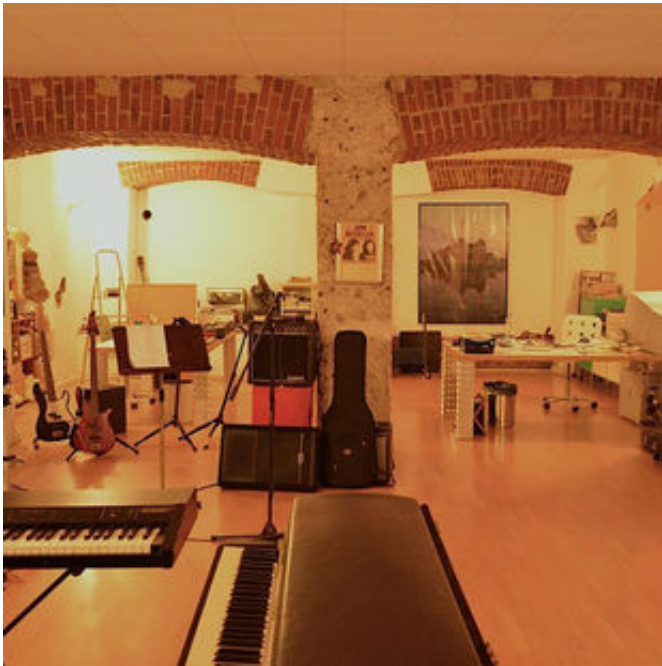
Kilowatt: 10 Kw

### HOW TO REACH US

Via Palermo 0 Milano 20121 Milano

MM2 Moscova

## Location card: L1109M - Brera Location n°CR53



## Location card: **L1109M - Brera Location n°CR53**

Per qualsiasi dubbio e richiesta potete contattarci via mail e telefono.

**Studiolabo S.r.l.**  
Via Palermo, 1 Milano  
tel. 02 36 63 81 50  
[www.milanolocation.it](http://www.milanolocation.it)

**Milano Location**  
Email: [info@milanolocation.it](mailto:info@milanolocation.it)  
Telefono: +39 02 36 63 81 50

**Milanolocation / Studiolabo**  
Via Palermo, 1 Milano

**Supporto diretto**  
Giulia Gasperini  
Telefono: +39 02 36 63 81 50

---

[www.studiolabo.it](http://www.studiolabo.it)  
[www.milanodesignnetwork.it](http://www.milanodesignnetwork.it)

[www.milanolocation.it](http://www.milanolocation.it)  
[www.brerarealestate.it](http://www.brerarealestate.it)  
[www.breradesigndistrict.it](http://www.breradesigndistrict.it)  
[www.fuorisalone.it](http://www.fuorisalone.it)