

## Location card: **L1253M - Brera Location n°CR81**



**CODE:** L1253M

**DISTRICT:** brera

**TOTAL SQ.M.:** 130

**HIGHT:** 3m

**FLOOR:** 2

**ROOMS NUMBER:** 4

**ENTRANCE ON STREET:** No

**ENTRANCE FROM COURTYARD:** Si

**TOTAL CAPACITY:** 10 people

### CONTACT

**website:** <http://breralocation.com/location-rent/>

**email** [info@breralocation.com](mailto:info@breralocation.com)

**tel.** 0236638150

[Link scheda location Online](#)

### DESCRIPTION:

Via Marsala corner Corso Garibaldi, an elegant building of the first 900 particular open space showroom 127 square meters on two levels. Renovated with fine finishes.

### PRICE

**daily:** non dichiarato

**fuorisalone:** non dichiarato

### TECHNICAL EQUIPMENT

Technical Features

Lighting: Yes

Audio System: Yes

Wi-fi: Yes

Kilowatt: 6 kw

Services

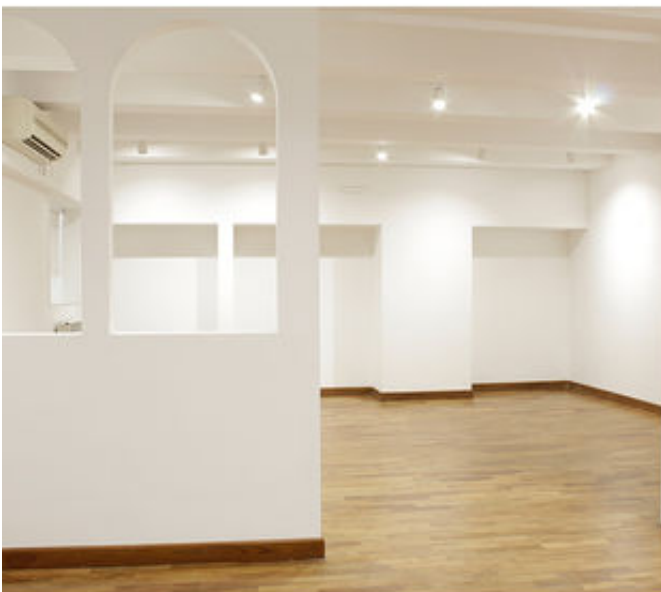
Catering area: Yes

Air Conditioning: Yes  
Heating system: Yes  
Cleaning Service: On request

## HOW TO REACH US

Via Marsala - Milano 20121 Milano  
MM2 Lanza

## Location card: **L1253M - Brera Location n°CR81**















## Location card: **L1253M - Brera Location n°CR81**

Per qualsiasi dubbio e richiesta potete contattarci via mail e telefono.

**Studiolabo S.r.l.**  
Via Palermo, 1 Milano  
tel. 02 36 63 81 50  
[www.milanolocation.it](http://www.milanolocation.it)

**Milano Location**  
Email: [info@milanolocation.it](mailto:info@milanolocation.it)  
Telefono: +39 02 36 63 81 50

**Milanolocation / Studiolabo**  
Via Palermo, 1 Milano

**Supporto diretto**  
Giulia Gasperini  
Telefono: +39 02 36 63 81 50

---

[www.studiolabo.it](http://www.studiolabo.it)  
[www.milanodesignnetwork.it](http://www.milanodesignnetwork.it)

[www.milanolocation.it](http://www.milanolocation.it)  
[www.brerarealestate.it](http://www.brerarealestate.it)  
[www.breradesigndistrict.it](http://www.breradesigndistrict.it)  
[www.fuorisalone.it](http://www.fuorisalone.it)