

Location card: **L1437M - Brera Location n° CR145**



CODE: L1437M

DISTRICT: brera

TOTAL SQ.M.: 40

HIGHT: 3m

FLOOR: 1

ROOMS NUMBER: 1

ENTRANCE ON STREET: Si

ENTRANCE FROM COURTYARD: No

TOTAL CAPACITY: 30 people

CONTACT

website: <http://breralocation.com/location-rent/>

email info@breralocation.com

tel. 0236638150

[Link scheda location Online](#)

DESCRIPTION:

The location with great charm is a bright and modern environment. The large and bright windows make the location unique and prestigious. Located in the renowned Brera/Garibaldi area, a characteristic and privileged area of Milan as it boasts a high quality residential and pedestrian crossing.

PRICE

daily: non dichiarato

fuorisalone: non dichiarato

TECHNICAL EQUIPMENT

Technical Features

Lighting: Yes

Wi-fi: Yes

Services

Air Conditioning: Yes

Heating system: Yes

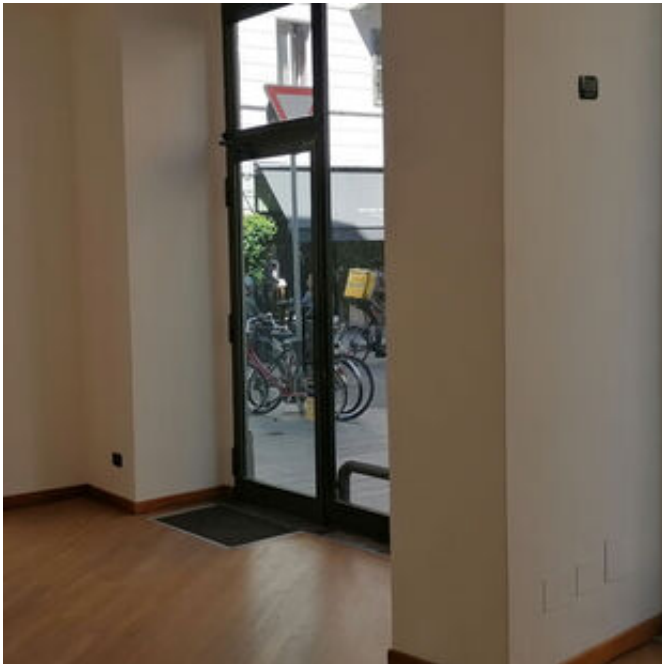
AVAILABILITY

-

HOW TO REACH US

Via Palermo Milano 20121 MI
MM2 - mezzi di superficie

Location card: **L1437M - Brera Location n° CR145**



Location card: **L1437M - Brera Location n° CR145**

Per qualsiasi dubbio e richiesta potete contattarci via mail e telefono.

Studiolabo S.r.l.
Via Palermo, 1 Milano
tel. 02 36 63 81 50
www.milanolocation.it

Milano Location
Email: info@milanolocation.it
Telefono: +39 02 36 63 81 50

Milanolocation / Studiolabo
Via Palermo, 1 Milano

Supporto diretto
Giulia Gasperini
Telefono: +39 02 36 63 81 50

www.studiolabo.it
www.milanodesignnetwork.it

www.milanolocation.it
www.brerarealestate.it
www.breradesigndistrict.it
www.fuorisalone.it