

Location card: **L1439M - Brera Location n°CR148**



CODE: L1439M

DISTRICT: brera

TOTAL SQ.M.: 45

HIGHT: 3m

FLOOR: 1

ROOMS NUMBER: 1

ENTRANCE ON STREET: Si

ENTRANCE FROM COURTYARD: No

TOTAL CAPACITY: 30 people

CONTACT

website: <http://breralocation.com/location-rent/>

email info@breralocation.com

tel. 0236638150

[Link scheda location Online](#)

DESCRIPTION:

Elegant and bright showroom in Via Ciovasso with entrance from the shop window on the street and secondary entrance by a vintage condominium courtyard, consisting of open space, dressing room and bathroom. Parquet floor, perimeter and central adjustable spotlights, large window on the street, with heating, Wi-Fi, fridge, possibility of temporary parking for loading and unloading in the condominium courtyard. During the year, the location is an exhibition space for art, design, fashion and services studio for art and culture; ideal for live and digital exhibitions, shooting and presentations.

PRICE

daily: non dichiarato

fuorisalone: non dichiarato

TECHNICAL EQUIPMENT

Technical Features

Lighting: Yes

Wi-fi: Yes

Kilowatt: 3 Kw

Services

Heating system: Yes

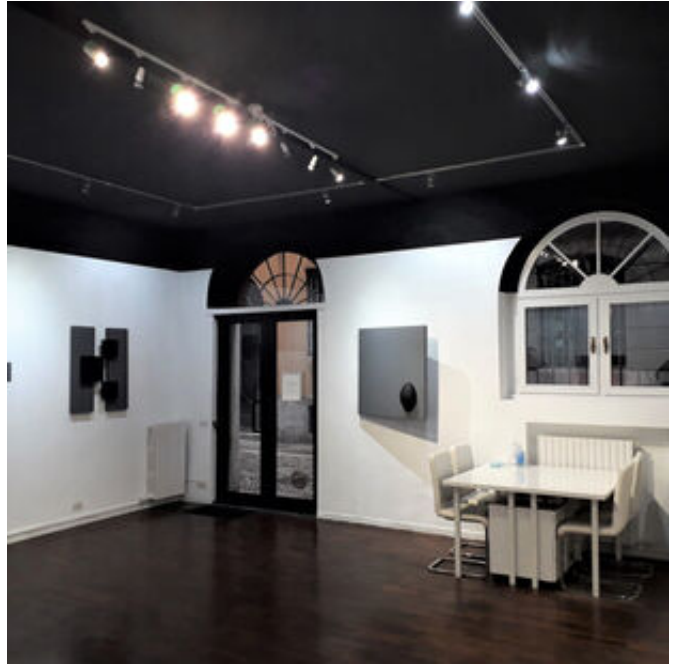
Cleaning Service: On request

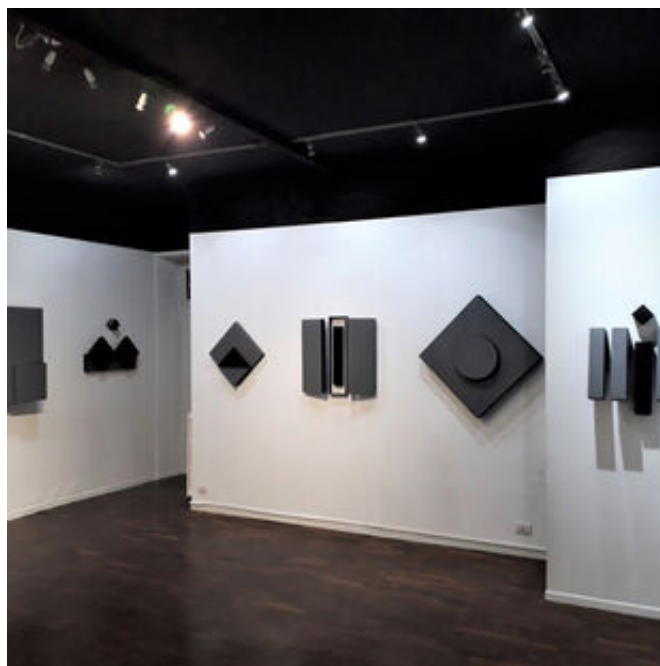
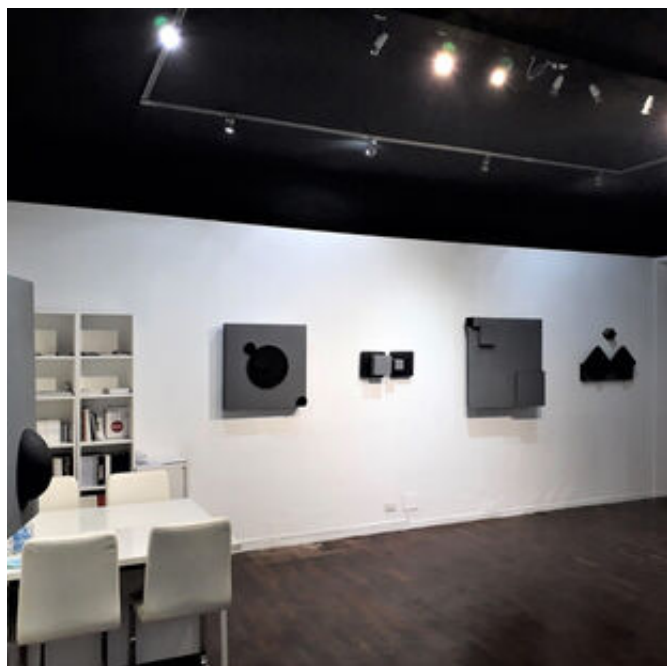
HOW TO REACH US

Via Ciovasso - Milano 20121 MI

MM2 Lanza - mezzi di superficie

Location card: **L1439M - Brera Location n°CR148**







Location card: **L1439M - Brera Location n°CR148**

Per qualsiasi dubbio e richiesta potete contattarci via mail e telefono.

Studiolabo S.r.l.
Via Palermo, 1 Milano
tel. 02 36 63 81 50
www.milanolocation.it

Milano Location
Email: info@milanolocation.it
Telefono: +39 02 36 63 81 50

Milanolocation / Studiolabo
Via Palermo, 1 Milano

Supporto diretto
Giulia Gasperini
Telefono: +39 02 36 63 81 50

www.studiolabo.it
www.milanodesignnetwork.it

www.milanolocation.it
www.brerarealestate.it
www.breradesigndistrict.it
www.fuorisalone.it