

Location card: **L1496M - Brera Location n°CR179**



CODE: L1496M

DISTRICT: brera

TOTAL SQ.M.: 90

HIGHT: 293m

FLOOR: 1

ROOMS NUMBER: 1

ENTRANCE ON STREET: No

ENTRANCE FROM COURTYARD: Si

TOTAL CAPACITY: 60 people

CONTACT

website: <http://breralocation.com/location-rent/>

email info@breralocation.com

tel. 0236638150

[Link scheda location Online](#)

DESCRIPTION:

Located within an enchanting Palazzo with an entrance in the courtyard on the lower floor. Its exhibition space covers approximately 90 square meters, with the only fixed structure being a bookshelf. The space is equipped with carefully designed lighting with adjustable spotlights, a bathroom, storage, and an office space. A freight elevator is available. The space can host exhibitions of art, photography, design, crafts, fashion, press conferences, and literary meetings.

PRICE

daily: non dichiarato

fuorisalone: non dichiarato

TECHNICAL EQUIPMENT

Technical Features

Lighting: Yes

Audio System: Yes

Video System: Yes

Wi-fi: Yes

Kilowatt: 220 Kwatt

Other: obbligatorio prevedere sicurezza al portone principale / Security at the main entrance is mandatory

Services

Catering area: Yes

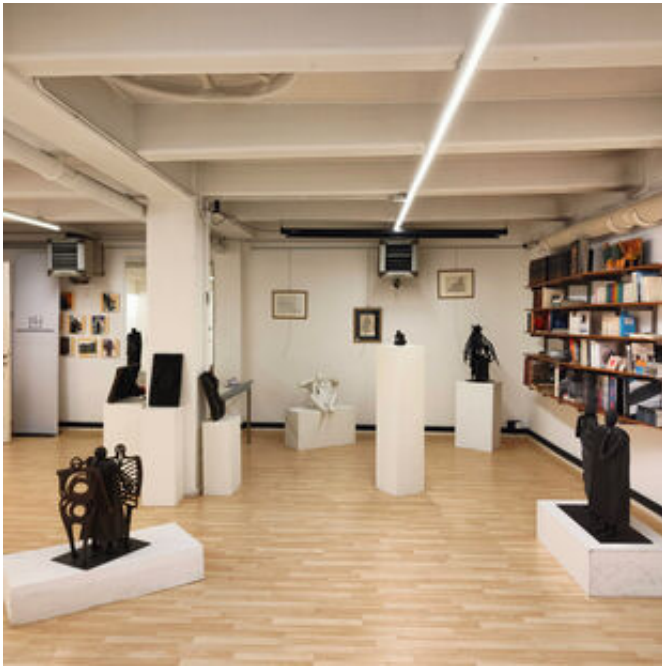
Heating system: Yes

Cleaning Service: On request

HOW TO REACH US

Via Legnano - Milano 20121 MI
MM2

Location card: **L1496M - Brera Location n°CR179**



Location card: **L1496M - Brera Location n°CR179**

Per qualsiasi dubbio e richiesta potete contattarci via mail e telefono.

Studiolabo S.r.l.
Via Palermo, 1 Milano
tel. 02 36 63 81 50
www.milanolocation.it

Milano Location
Email: info@milanolocation.it
Telefono: +39 02 36 63 81 50

Milanolocation / Studiolabo
Via Palermo, 1 Milano

Supporto diretto
Giulia Gasperini
Telefono: +39 02 36 63 81 50

www.studiolabo.it
www.milanodesignnetwork.it

www.milanolocation.it
www.brerarealestate.it
www.breradesigndistrict.it
www.fuorisalone.it