

Location card: **L1512M - Brera Location n°CR188**



CODE: L1512M

DISTRICT: brera

TOTAL SQ.M.: 70

HIGHT: 0m

FLOOR: 0

ROOMS NUMBER: 1

ENTRANCE ON STREET: No

ENTRANCE FROM COURTYARD: No

TOTAL CAPACITY: 40 people

CONTACT

website: <http://breralocation.com/location-rent/>

email info@breralocation.com

tel. 0236638150

[Link scheda location Online](#)

DESCRIPTION:

New and renovated space in the heart of the Brera district with street-facing storefront.

PRICE

daily: non dichiarato

fuorisalone: non dichiarato

TECHNICAL EQUIPMENT

Technical Features

Lighting: yes

Wi-fi: yes

Services

Air Conditioner: yes

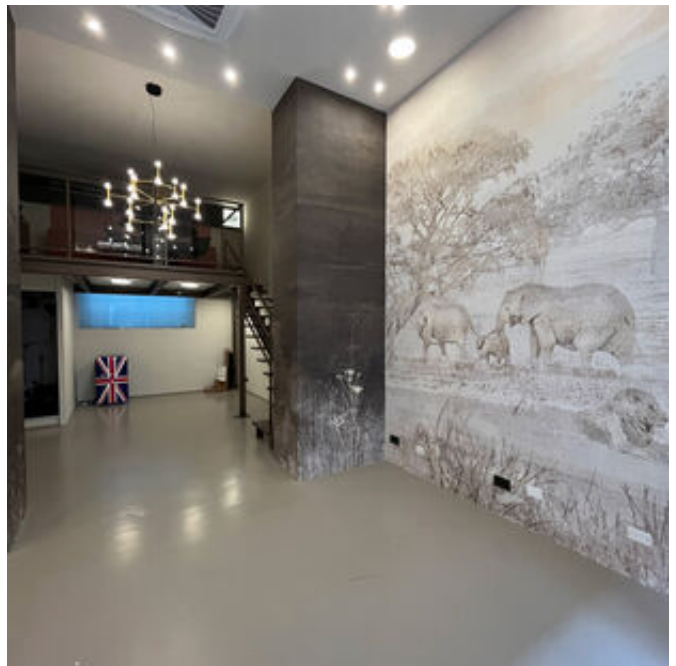
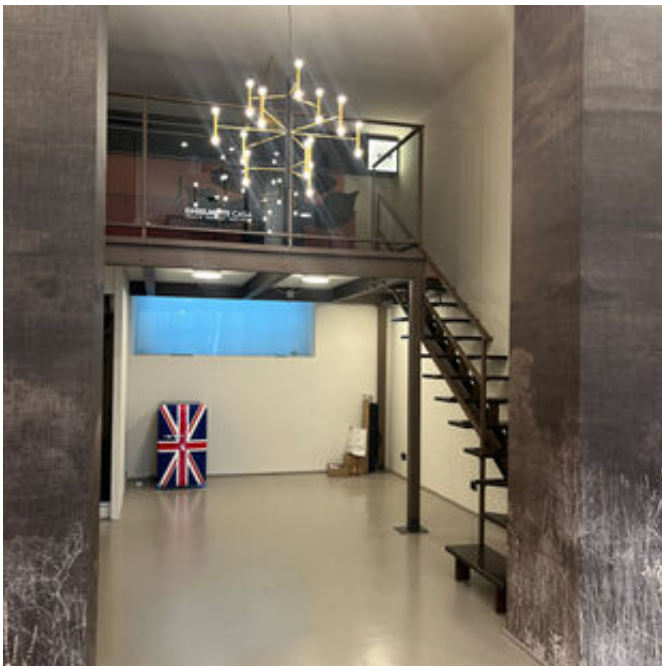
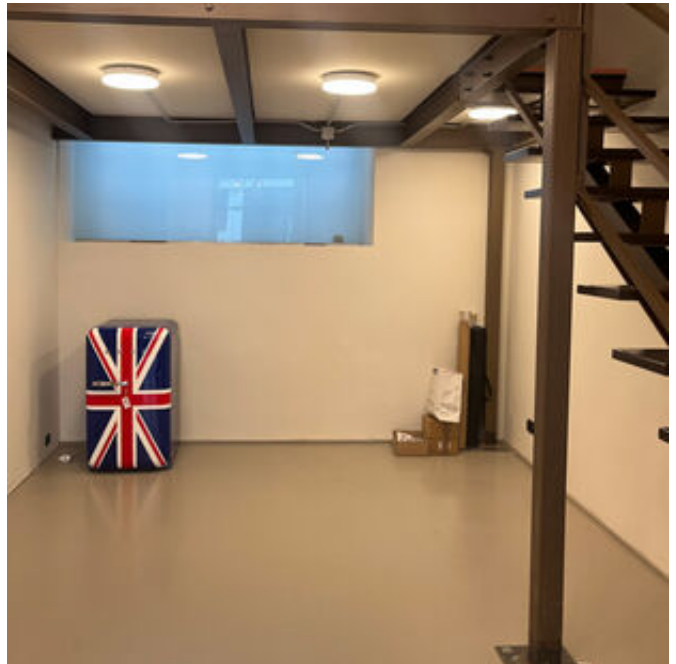
Heating: yes

HOW TO REACH US

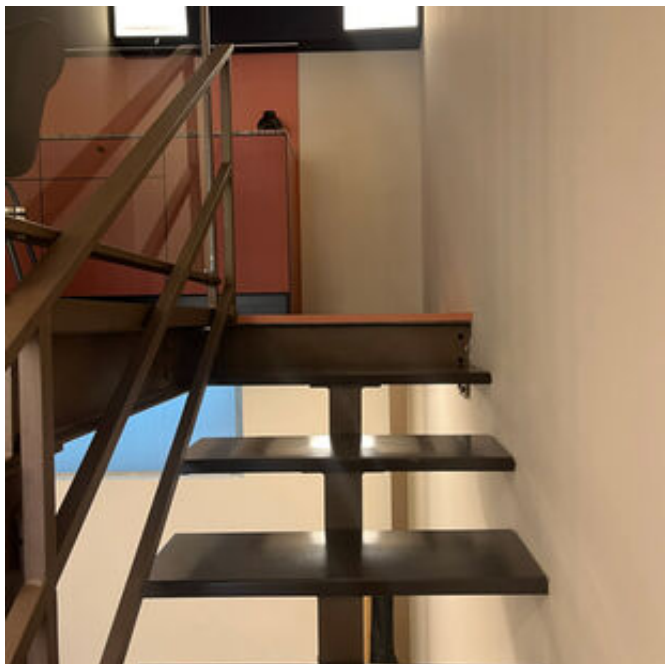
Via Statuto Milano 20121 Milano

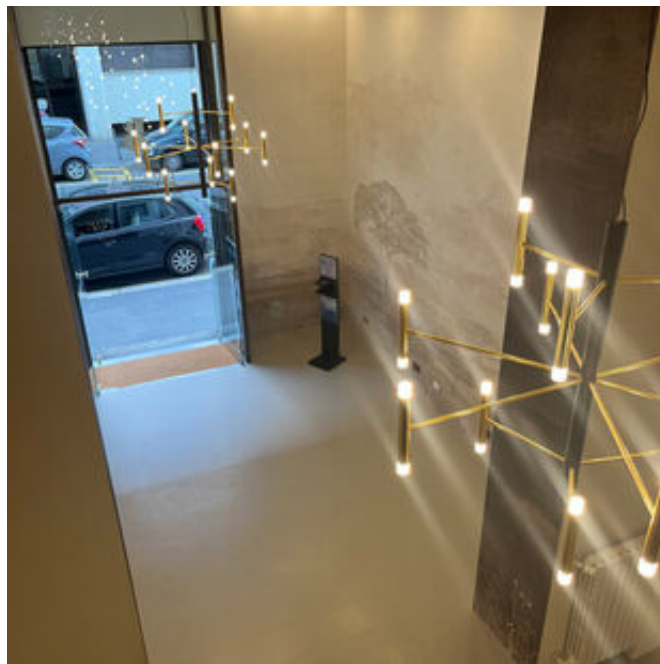
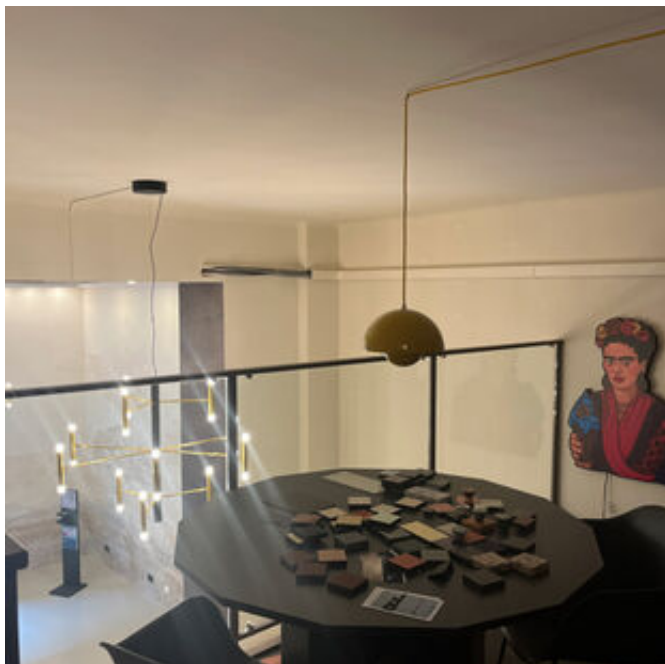
MM1 - MM2 - mezzi di superficie

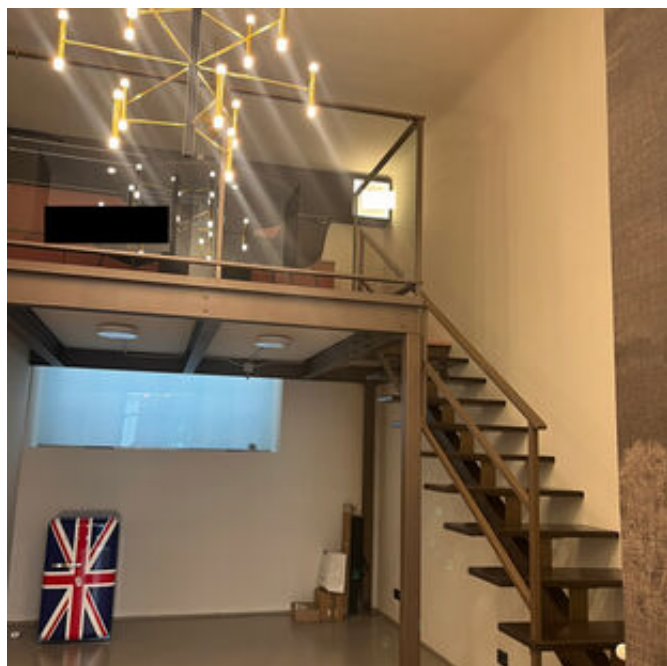
Location card: L1512M - Brera Location n°CR188











Location card: **L1512M - Brera Location n°CR188**

Per qualsiasi dubbio e richiesta potete contattarci via mail e telefono.

Studiolabo S.r.l.
Via Palermo, 1 Milano
tel. 02 36 63 81 50
www.milanolocation.it

Milano Location
Email: info@milanolocation.it
Telefono: +39 02 36 63 81 50

Milanolocation / Studiolabo
Via Palermo, 1 Milano

Supporto diretto
Giulia Gasperini
Telefono: +39 02 36 63 81 50

www.studiolabo.it
www.milanodesignnetwork.it

www.milanolocation.it
www.brerarealestate.it
www.breradesigndistrict.it
www.fuorisalone.it