

## Location card: **L1526M - Brera Location n°CR200**



**CODE:** L1526M

**DISTRICT:** brera

**TOTAL SQ.M.:** 110

**HIGHT:** 0m

**FLOOR:** 0

**ROOMS NUMBER:** 1

**ENTRANCE ON STREET:** Si

**ENTRANCE FROM COURTYARD:** No

**TOTAL CAPACITY:** 50 people

### CONTACT

**website:** <http://breralocation.com/location-rent/>

**email** [info@breralocation.com](mailto:info@breralocation.com)

**tel.** 0236638150

[Link scheda location Online](#)

### DESCRIPTION:

Located inside a building on one of the most central and busy streets in the neighborhood, the 110-square-meter space presents itself as an ideal apartment for private events and showrooms, with its own entrance and customizable.

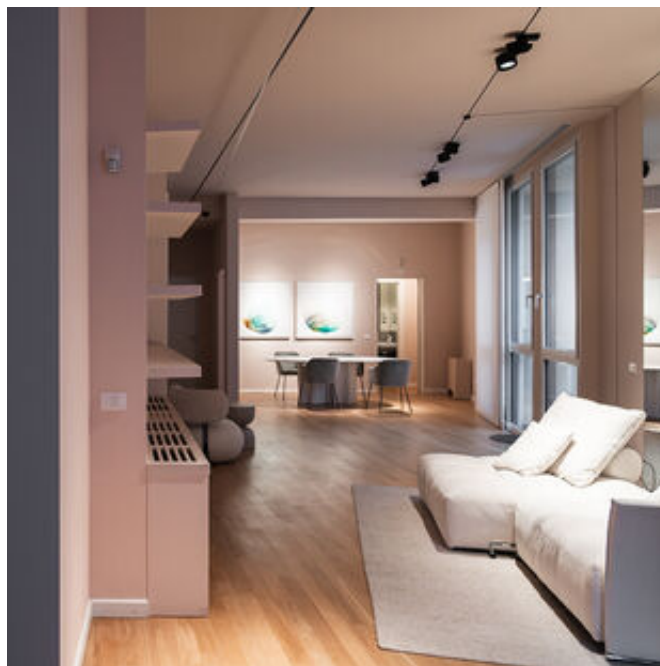
Upon request, the space can be delivered empty.

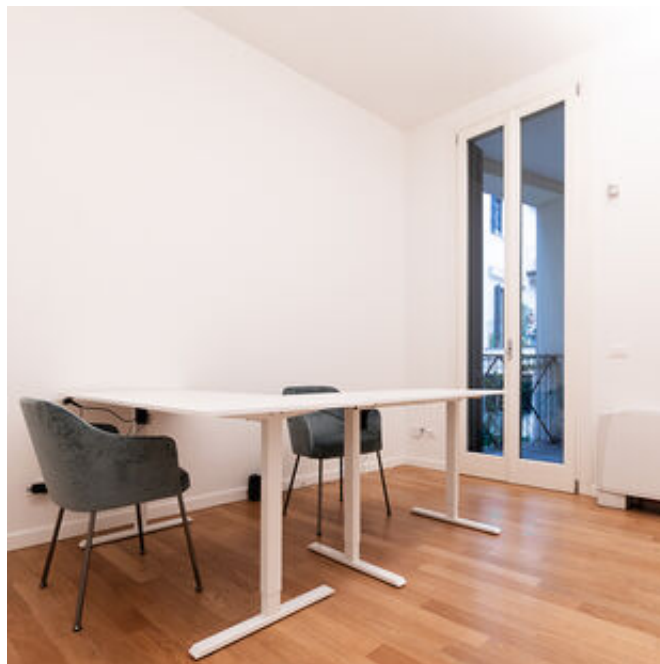
### PRICE

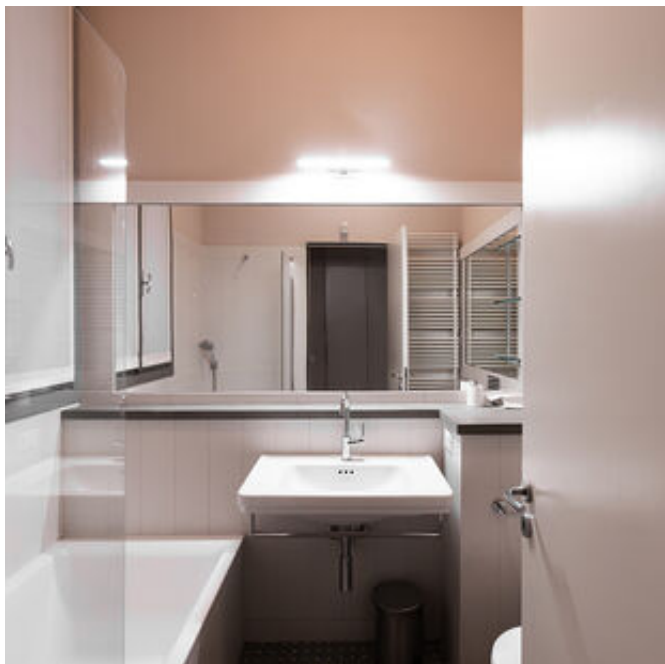
**daily:** non dichiarato

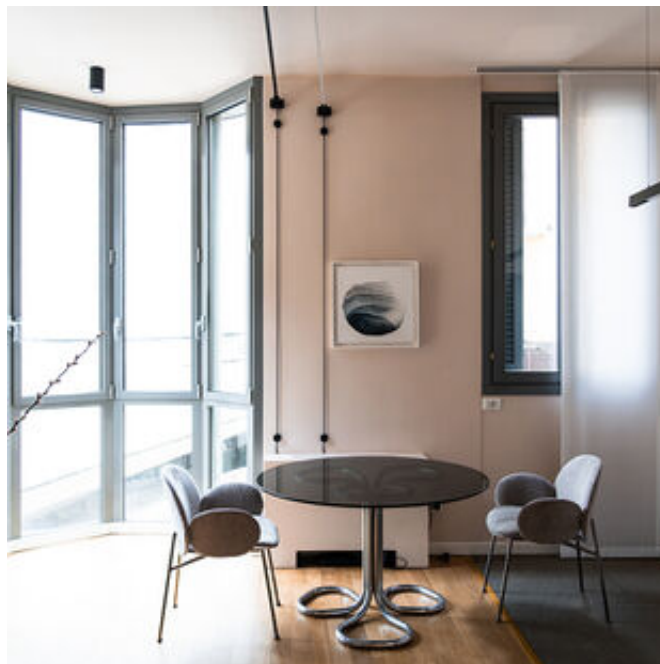
**fuorisalone:** non dichiarato

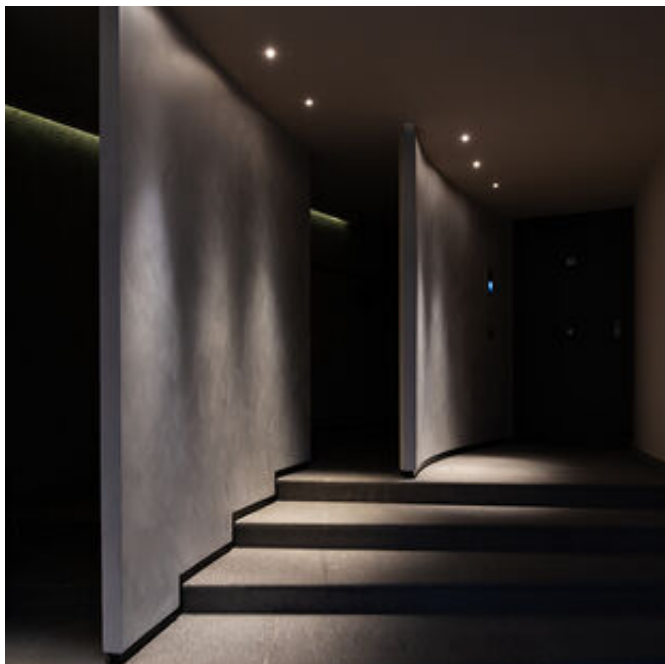
## Location card: L1526M - Brera Location n°CR200











## Location card: **L1526M - Brera Location n°CR200**

Per qualsiasi dubbio e richiesta potete contattarci via mail e telefono.

**Studiolabo S.r.l.**  
Via Palermo, 1 Milano  
tel. 02 36 63 81 50  
[www.milanolocation.it](http://www.milanolocation.it)

**Milano Location**  
Email: [info@milanolocation.it](mailto:info@milanolocation.it)  
Telefono: +39 02 36 63 81 50

**Milanolocation / Studiolabo**  
Via Palermo, 1 Milano

**Supporto diretto**  
Giulia Gasperini  
Telefono: +39 02 36 63 81 50

---

[www.studiolabo.it](http://www.studiolabo.it)  
[www.milanodesignnetwork.it](http://www.milanodesignnetwork.it)

[www.milanolocation.it](http://www.milanolocation.it)  
[www.brerarealestate.it](http://www.brerarealestate.it)  
[www.breradesigndistrict.it](http://www.breradesigndistrict.it)  
[www.fuorisalone.it](http://www.fuorisalone.it)